

Funny Stuff...

Daffy-nitions:

Abdicate:

Giving up all hope of achieving a flat abdomen after the holidays.

Flatulence:

The emergency vehicle that picks you up when you are run over.

DAYTON... ??????

Coming sooner than you think....

What should we do????

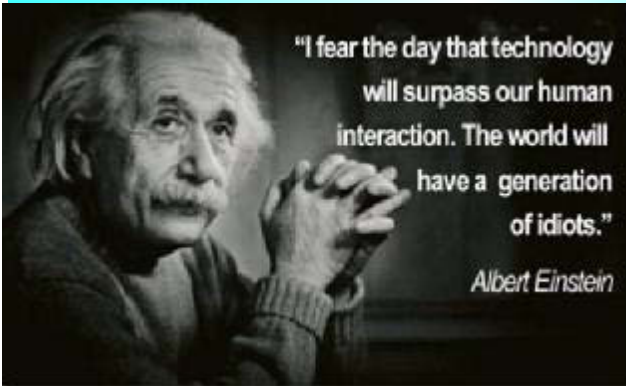
It's now time to start seriously considering our annual trek to the Ham Radio Mecca of the world, DAYTON !

For the past 2 years our group was not able to meet due to reduced attendance at this event. Gas prices and the sad state of the economy have impacted many hams ability to attend.

I am asking the members who may be at Dayton this year, to *PLEASE* make suggestions before the end of February, 2013. Should we assemble... or take another break this year ? It's your call!

Loby-WA2AXZ@arrl.net

72chew.net



The "Chew"

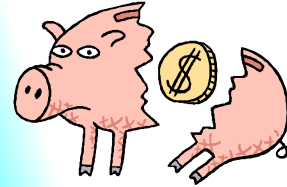
SEVENTY-TWO



"Where Choosy People

Choose to CHEW!"

NEWSLETTER February 2013

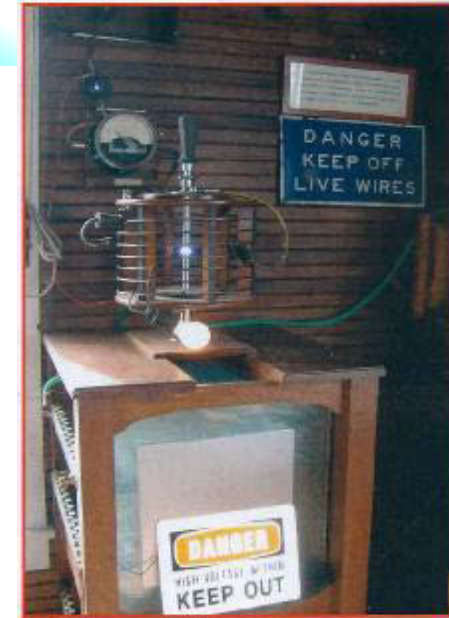


Our Annual Fundraiser is in full swing...

Your small contribution of a few dollars goes to website maintenance and the purchase of paper, ink and postage for the various 7272 Ragchew special events.

A hearty Thank You to Geno-W2BWQ and everyone in the group who helped keep our organization without organization running in 2012. Please, mail yours to Loby-WA2AXZ today.

New England Museum of Wireless and Steam



If you are planning a trip in the North east this year, I heartily recommend stopping at this museum. Located at 1300 French town Rd, East Greenwich, Rhode Island. It is nestled behind tall trees and has

a fine collection of vintage radio equipment as well as operating stationary steam engines of every age imaginable. The photo above shows a working 1903 Massie wireless station "PJ" This "massie" transmitter, moved to the museum from it's original Pt. Judith, RI. location looks and works as it did 109 years ago. Check out their web site for further photos and historic information at:

<http://newsm.org>

Valentine's Day greetings to all of our YL's and XYL's.



72chew.net

Contester Disruptions:

Rant #1 of the new year. "Normal Amateur Use"

We hear that phrase usually at the end of a net whereupon the net control station gives up the frequency for others to use.

Last evening (January 25th, 2013) while speaking with friends on our sister "1721" 160 meter net, conversations were going strong. Then... all hell broke loose! We had been speaking on 1.871 and enjoying the net when dozens of CW operators started pounding their keys all over the established frequency of our net. All this done without consideration of their fellow hams, not wishing to participate in contest. We continued our net through the hundreds of frantic CQ-CQ-CQ-CQ-CQ's and finished up a bit early as their inconsiderate use of the frequencies had interfered and quite literally shut us down.

I participate in certain contests but try my best not to disrupt active frequencies. I wonder where the ARRL Official Observers are during these events. Shouldn't they be concerned about this seemingly never ending battle between regular users and testers that come out of the woodwork only to quickly disappear after the contest is over?

I am checking out the ARRL rules and regulations though they should, no... **MUST**, include a clause that makes testers avoid stations, already working on frequency, until the end of the net (or whatever) where it is then turned over to regular amateur use.

Note***

QST Editor Steve Ford-WB8IMY replied that this 160m contest was a "CQ" sponsored event. Even so, there are guidelines



though sadly, some hams choose to ignore them. The link is attached for your information. <http://www.arrl.org/files/file/Contest%20-%20General/HF-FAQ.pdf>
Many Thanks to QST Editor Steve Ford for this information!

**Any comments? What's your opinion?
Send them to Loby at wa2axz@arrl.net**

GREAT WEB SITES:

http://www.n1yz.com/HFNET_LIST.HTM

This is N1YZ's listing of active nets across the HF spectrum. Of course our 7272 chew is listed along with our friends on the Corn Cob net. It is a bit dated (March 2010) though I e-mailed the manager to update our listing and add a couple more.

Another site gives the viewer a complete view of the entire United States Frequency allocations. You may want to copy and past this as it is a loooong one!

www.ntia.doc.gov/files/ntia/publications/spectrum_wall_chart_aug2011.pdf
WHEW!

Note from your Editor...

Our Monthly Newsletter "THE CHEW" contains information about the activities and participants in the 7272 Rag Chew Group. We rely on contributions of stories and pictures from the members to keep all of us up to date, impart information we can all use and, of course, to raise a smile and a chuckle or two. If you find a new "Taz" photo that can be used for future certificates and QSLs...That too is greatly appreciated.

Please, e-mail your stories, tech info and photos to Loby at wa2axz@arrl.net

Passings: January 18th, 2013



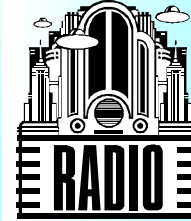
*The XYL of Rick-W3YGH
Erma Wodowski
and
Tom Childs-
KK4CEI*



*Details where condolences
may be sent in the members
forum of 72chew.net.*

Get Well:

*Best wishes to Steve Almekinder—N2MKR
as he recovers from a recent Heart Attack.*



NCS Tip of the Month... *"A pause that refreshes"*

Winter band conditions have not been kind. Take a few moments, before keying the mike, to listen for stations trying to check in or make contacts. This gives everyone a chance to join in with the group.

Goods and Services:

*Need QSLs or
Eyeball Cards?*

KB3IFH QSL Cards

www.kb3ifh.homestead.com



Have anything to sell or a service to offer? Place your notice here!

Contact wa2axz@arrl.net

72chew.net