

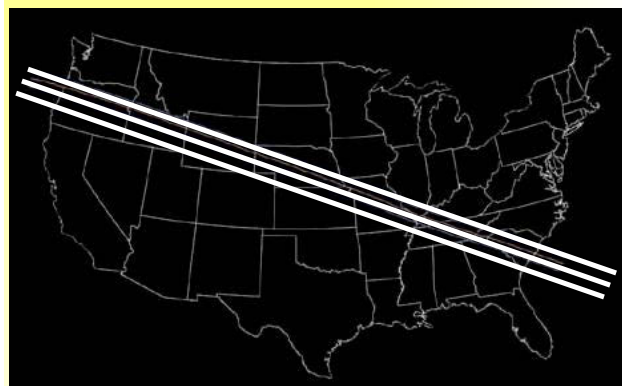
First total solar eclipse in lower 48 since 1979... and the first to sweep the entire nation since 1918.

On August 21st beginning around 1716 GMT, the eclipse will sweep across the nation. Totality will occur in the east around 1835-1845 GMT.

As with all viewing, looking directly at the sun, even with sunglasses will cause permanent damage to your eyes. Using shade 12-14 welder's glasses or making a "camera-obscura" for indirect viewing is vital for safety.

This is reported to be a once in a lifetime event so, hopefully you'll have clear skies. Check out this website for full information on the eclipsa and enjoy the event.

<http://www.eclipse2017.org/>



Path of viewing the total eclipse within the white stripes. Viewing north and south will give a partial eclipse view.

72chew.net

The "Chew"

SEVENTY-TWO



"Where Choosy People

Choose to CHEW!"

NEWSLETTER August 2017

For those wanting to work radio during the eclipse, it may be fruitful to operate the lower bands as the sun is gradually blocked. If you do, please let us at the "Chew" know what you have experienced.



Bobby & Riley waving a hand to all as they cool off in Grandpa Loby's pool.

K1R Labor Day Weekend Special Event!



2017 marks our "lucky" thirteenth year of doing special events with the 7.272 Rag Chew net. For a long time we used to operate with half-hour net control stations but due to the many net control stations taking a much needed late-summer vacation, we will operate with our regular hourly NCS's 8am to noon then ask for volunteers from noon and beyond. If you would like to help out On Saturday, September 2nd, Sunday, the 3rd or Monday the 4th, Labor Day, PLEASE contact me, Loby, your Special Events Coordinator, at wa2axz@arrl.net. I can guarantee a great special event, and as always, a nice certificate is available to anyone working our stations during this weekend.

Field Day 2017

For more than a dozen years I was involved with ARRL Field Day activities with our K2IRT NYC Transit radio club. Time has passed and many members retired so I've decided to step back a bit and let the younger crowd have fun.

I visited the KCRC Kings County Repeater Club site in the Gateway National Park-Floyd Bennett naval airfield, directly behind Kennedy airport. There at the end of Runway 24 where I used to operate, they had set up two tents and various antennas to operate.



If any of our members have photos of their Field Day operations, please send them to me, [Loby-\(wa2axz@arrl.net\)](mailto:Loby-(wa2axz@arrl.net)) and I'll publish them in a future issue.

~~~~~

## Kring Point Party September 9th

The weekend after Labor Day, we will be having our 15th annual "International" Kring Point Party in the Thousand Islands, Kring Point State Park New York. Founded by Tom-KC8QGJ (SK), friends and families from various radio groups will gather there to enjoy a great day of fun and food.

If you would like to be part of this end-of-summer shindig, please contact Loby-WA2AXZ for details and directions.



## Franklin Institute Ham Radio station W3TKQ

My grandsons and I visited Philly in July and took in the sights and sounds of this historic town. As I work in the New York Transit Mu-



seum, I started a conversation with one of the curators of the Franklin Institute to find that for many years there was an active ham radio station there, open to the public. As time went on, in the mid-70's, the station was dismantled and other exhibits installed. Sadly, the fates of other local museum radio stations have been similar due to the new generation being only able to tap on a screen, and not on a Morse code key. From the photo it seems the station had a nice array of "Boat Anchors" on which to talk to the world! *Loby-WA2AXZ*

~~~~~

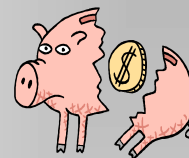
Volunteers Wanted!

If you would like to be one of our Net Control Stations on a regular schedule or emergency fill in, please contact our net scheduler, John-W8LWX



Our Fund RaiSer

During summer time a call goes out to our members to help us keep our Organization Without Organization afloat. Your small contribution keeps the website on line and also helps with the postage and background costs encountered during the year. Please send your contribution to your special events Coordinator, WA2AXZ, today.



A note from your editor ...

Our monthly newsletter, "THE CHEW", contains information about the activities and participants in the 7.272 Ragchew Net. We rely on contributions of stories and pictures from the members to keep all of us up to date, impart information we can all use and, of course, raise a smile and a chuckle or two.

If you find a new "Taz" photo that can be used for future certificates and QSLs, that too is greatly appreciated. Please, e-mail your stories, tech info and photos to Loby at wa2axz@arrl.net. *Many Thanks!*

~~~~~

### Goods and Services:

**NEED QSLs OR  
EYEBALL  
CARDS ???**



**KB3IFH QSL Cards**  
[www.kb3ifh.homestead.com](http://www.kb3ifh.homestead.com)

~~~~~

72chew.net